

- **Better Decisions in Less Time**
- **Compare and Rank Decision Points**
- **Improve Group Interaction**
- **Promote Collaboration**



Decision Support Module™

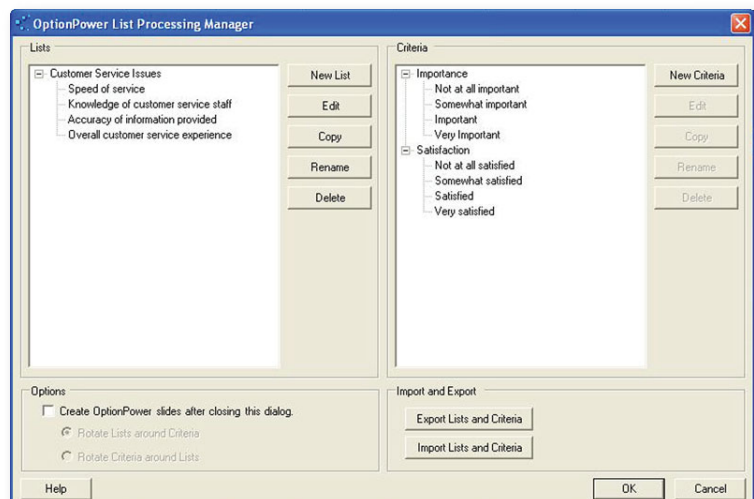
The Decision Support Module™ is an add-on product for the OptionPower® interactive system. It is designed to tap the Consensus Intelligence™ of meeting participants. The system combines state-of-the-art software and wireless keypads for facilitated group polling processes. The module includes a List Processing™ Manager to enter and edit lists of decision items and polling criteria. It also features a List Processing™ Exercise Slide Generator that quickly creates multi-slide polling sequences.

The OptionPower® Decision Support Module acts like a turbocharger for group thinking. It uses the power of technology to improve human interaction. The Module gives everyone an equal voice, speeds interaction, and enhances group collaboration. It improves meeting focus, trust, participation, energy and decision-making.

Key Features

List Processing™ Manager - The List Processing Manager allows users to create lists of items for evaluation in a meeting. Lists may include new initiatives, action items, spending priorities etc. Each list may consist of up to 999 items. During an interactive List Processing™ exercise each list may be evaluated using one or more criteria involving a numeric assessment scale. The List Processing Manager allows users to create, edit, and copy scalar criteria to be used as part of the list evaluation process. Each criterion uses a numeric scale to rate list items (e.g. 1. Not Important, 2. Somewhat Important, 3. Critically Important).

List and Criteria Import/Export from Excel - The OptionPower Decision Support module includes a utility to import and export lists of items and evaluation criteria from Excel. This makes it easy for the user to avoid retyping list items and criteria associated with a facilitated group process. Template Excel worksheet formats help you easily author and import lists of polling items and criteria.



Frequency Distribution Chart - The Frequency Distribution Chart slide type is used to display the results of a list processing exercise. It allows for visual comparison of results for all items on a list. After a list of items is polled using one or more scalar criteria, this slide will show the averages of all participants on a Frequency Distribution Chart. The chart includes one vertical bar for each list item and displays the average scalar result for the item. Items may be displayed in order, or toggled, using a Hot Key, to show item averages from low to high or high to low.

X/Y Chart - The X/Y Chart slide type is used to display the results of a list processing exercise. It presents the average results for one criteria associated with each list item. The first criterion is displayed on the X-axis of the chart and the average results for another criteria on the Y axis of the chart.

Bubble Chart - The Bubble Chart slide type is used to display the results of a list processing exercise. It presents the average results for three criteria associated with each list item. The first criterion is displayed on the X-axis of the chart. The second criterion is displayed on the Y-axis. The final criterion is displayed as the scalar size of a bubble for the list item.

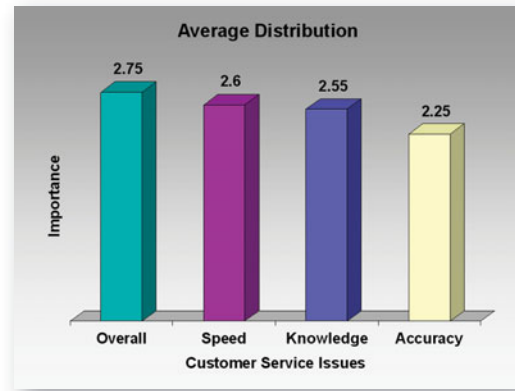
Toggle Averages Chart Control - Press a key to toggle the display order of bar chart items on the Frequency Distribution Chart. Average results for list items may be displayed in three ways: list order; high to low average order; and low to high average order.

Display List Item Chart Control - Press a key and OptionPower will display the full text of an individual list item at the top of the chart. The color for the corresponding bar representing the list item will change to a highlighted color.

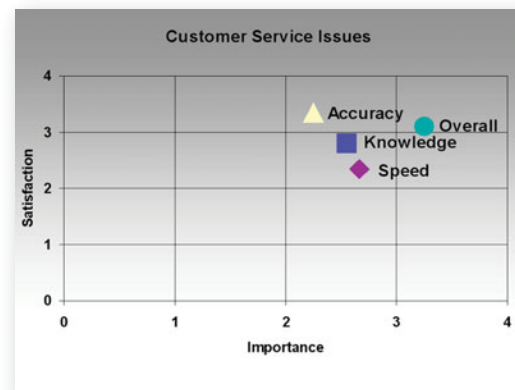
Item Label Chart Control - Users may configure any Decision Support Module data display slide to show items by item name, alias or item number.

List Item Cross-Tabulation Chart Control - Users may toggle the display to show item chart results by subgroup cross-tabulations (e.g. data function, tenure, location, etc.).

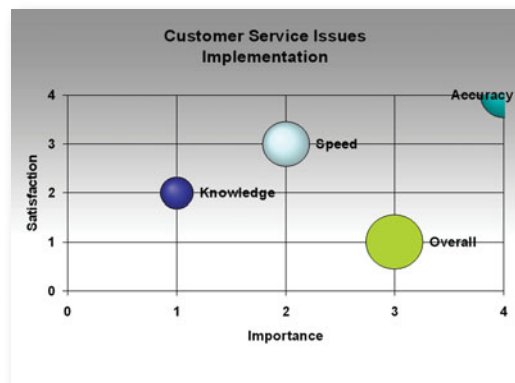
List Processing™ Exercise Slide Generator - This tool allows users to generate a List Processing™ exercise to poll items against one or more scalar criteria. All items may be polled for one criterion at a time. Or, alternatively, all criteria may be polled for each item before moving to the next item on the list.



Frequency Distribution Chart



X/Y Chart



Bubble Chart